

North Area Version
Fukuyama City Flood Hazard Map

Revised February 2021 Special Issue

Evacuation Shelters

No.	Facility name	Type of disaster	No.	Facility name	Type of disaster
1	Chuo-Shuokyo Elementary Hall	●	134	Yoshino Prefectural Fuyukyo High School	●
2	Hiroba Elementary School	●	135	Yoshino Prefectural Yamaoka High School	●
3	Honjo Junior High School	●	136	Yoshino Prefectural Yamaoka High School	●
4	Honjo Elementary School	●	137	Yoshino Prefectural Yamaoka High School	●
5	Chuo Elementary School	●	138	Yoshino Prefectural Yamaoka High School	●
6	Yoshino Elementary School	●	139	Yoshino Prefectural Yamaoka High School	●
7	Yoshino Elementary School	●	140	Yoshino Prefectural Yamaoka High School	●
8	Yoshino Elementary School	●	141	Yoshino Prefectural Yamaoka High School	●
9	Yoshino Elementary School	●	142	Yoshino Prefectural Yamaoka High School	●
10	Yoshino Elementary School	●	143	Yoshino Prefectural Yamaoka High School	●
11	Yoshino Elementary School	●	144	Yoshino Prefectural Yamaoka High School	●
12	Yoshino Elementary School	●	145	Yoshino Prefectural Yamaoka High School	●
13	Yoshino Elementary School	●	146	Yoshino Prefectural Yamaoka High School	●
14	Yoshino Elementary School	●	147	Yoshino Prefectural Yamaoka High School	●
15	Yoshino Elementary School	●	148	Yoshino Prefectural Yamaoka High School	●
16	Yoshino Elementary School	●	149	Yoshino Prefectural Yamaoka High School	●
17	Yoshino Elementary School	●	150	Yoshino Prefectural Yamaoka High School	●
18	Yoshino Elementary School	●	151	Yoshino Prefectural Yamaoka High School	●
19	Yoshino Elementary School	●	152	Yoshino Prefectural Yamaoka High School	●
20	Yoshino Elementary School	●	153	Yoshino Prefectural Yamaoka High School	●
21	Yoshino Elementary School	●	154	Yoshino Prefectural Yamaoka High School	●
22	Yoshino Elementary School	●	155	Yoshino Prefectural Yamaoka High School	●
23	Yoshino Elementary School	●	156	Yoshino Prefectural Yamaoka High School	●
24	Yoshino Elementary School	●	157	Yoshino Prefectural Yamaoka High School	●
25	Yoshino Elementary School	●	158	Yoshino Prefectural Yamaoka High School	●
26	Yoshino Elementary School	●	159	Yoshino Prefectural Yamaoka High School	●
27	Yoshino Elementary School	●	160	Yoshino Prefectural Yamaoka High School	●
28	Yoshino Elementary School	●	161	Yoshino Prefectural Yamaoka High School	●
29	Yoshino Elementary School	●	162	Yoshino Prefectural Yamaoka High School	●
30	Yoshino Elementary School	●	163	Yoshino Prefectural Yamaoka High School	●
31	Yoshino Elementary School	●	164	Yoshino Prefectural Yamaoka High School	●
32	Yoshino Elementary School	●	165	Yoshino Prefectural Yamaoka High School	●
33	Yoshino Elementary School	●	166	Yoshino Prefectural Yamaoka High School	●
34	Yoshino Elementary School	●	167	Yoshino Prefectural Yamaoka High School	●
35	Yoshino Elementary School	●	168	Yoshino Prefectural Yamaoka High School	●
36	Yoshino Elementary School	●	169	Yoshino Prefectural Yamaoka High School	●
37	Yoshino Elementary School	●	170	Yoshino Prefectural Yamaoka High School	●
38	Yoshino Elementary School	●	171	Yoshino Prefectural Yamaoka High School	●
39	Yoshino Elementary School	●	172	Yoshino Prefectural Yamaoka High School	●
40	Yoshino Elementary School	●	173	Yoshino Prefectural Yamaoka High School	●
41	Yoshino Elementary School	●	174	Yoshino Prefectural Yamaoka High School	●
42	Yoshino Elementary School	●	175	Yoshino Prefectural Yamaoka High School	●
43	Yoshino Elementary School	●	176	Yoshino Prefectural Yamaoka High School	●
44	Yoshino Elementary School	●	177	Yoshino Prefectural Yamaoka High School	●
45	Yoshino Elementary School	●	178	Yoshino Prefectural Yamaoka High School	●
46	Yoshino Elementary School	●	179	Yoshino Prefectural Yamaoka High School	●
47	Yoshino Elementary School	●	180	Yoshino Prefectural Yamaoka High School	●
48	Yoshino Elementary School	●	181	Yoshino Prefectural Yamaoka High School	●
49	Yoshino Elementary School	●	182	Yoshino Prefectural Yamaoka High School	●
50	Yoshino Elementary School	●	183	Yoshino Prefectural Yamaoka High School	●
51	Yoshino Elementary School	●	184	Yoshino Prefectural Yamaoka High School	●
52	Yoshino Elementary School	●	185	Yoshino Prefectural Yamaoka High School	●
53	Yoshino Elementary School	●	186	Yoshino Prefectural Yamaoka High School	●
54	Yoshino Elementary School	●	187	Yoshino Prefectural Yamaoka High School	●
55	Yoshino Elementary School	●	188	Yoshino Prefectural Yamaoka High School	●
56	Yoshino Elementary School	●	189	Yoshino Prefectural Yamaoka High School	●
57	Yoshino Elementary School	●	190	Yoshino Prefectural Yamaoka High School	●
58	Yoshino Elementary School	●	191	Yoshino Prefectural Yamaoka High School	●
59	Yoshino Elementary School	●	192	Yoshino Prefectural Yamaoka High School	●
60	Yoshino Elementary School	●	193	Yoshino Prefectural Yamaoka High School	●
61	Yoshino Elementary School	●	194	Yoshino Prefectural Yamaoka High School	●
62	Yoshino Elementary School	●	195	Yoshino Prefectural Yamaoka High School	●
63	Yoshino Elementary School	●	196	Yoshino Prefectural Yamaoka High School	●
64	Yoshino Elementary School	●	197	Yoshino Prefectural Yamaoka High School	●
65	Yoshino Elementary School	●	198	Yoshino Prefectural Yamaoka High School	●
66	Yoshino Elementary School	●	199	Yoshino Prefectural Yamaoka High School	●
67	Yoshino Elementary School	●	200	Yoshino Prefectural Yamaoka High School	●

Buildings that serve as evacuation shelters: * Gymnasium * School building * Faculty * Office

* All evacuation shelters will be open, so make sure to confirm the open status when evacuating. (See P2 on the front side.)

Evacuation Areas

No.	Facility name
1	Chuo Park
2	Fuyukyo Civic Park
3	Yoshino Civic Park (Green space)
4	Chuo Park
5	Yoshino Civic Park (Green space on site of fire, etc.)
6	Yoshino Civic Park

Legend of flood-prone areas

The hazard map indicates "flood-prone areas and depth" predicted when the rivers flowing in and around the City have overflowed.

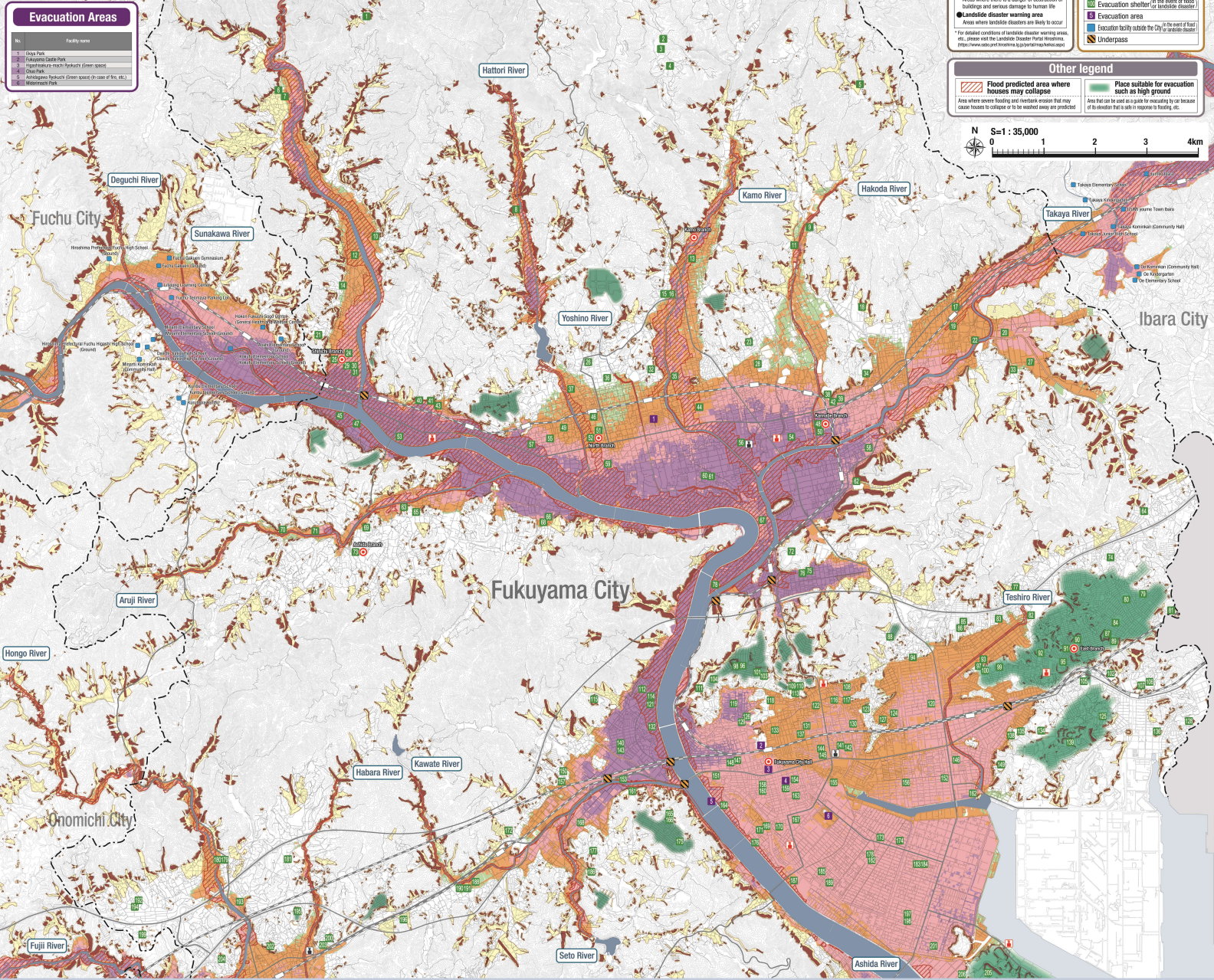
(Target rivers) Ashida River, Teshiro River, Kawa River, Hongo River, Yoshino River, Kamo River, Habara River, Hattori River, Kaya River, Fuji River, Habara River, Hongo River, Kaji River, Sano River, Sunakawa River, Deguchi River, Ota River

■ **Precipitation on which assumption is based**
 In the case of the Ashida River, the total amount of rainfall over a 24-hour period: 572 mm

■ **Flood depth / conditions**

5.0 m or more	The 3rd - 5th floors are inundated.
3.0 m or more and less than 5.0 m	The 2nd floor is inundated.
0.5 m or more and less than 3.0 m	The 1st floor is inundated.
Less than 0.5 m	The space under the floor may be inundated.

* A special residential house may be inundated up to the 5th floor.



Legend of landslide disasters

- Landslide disaster special warning area
- Landslide disaster warning area
- Landslide disaster special warning area
- Areas where there is a danger of destruction of buildings and serious damage to human life
- Landslide disaster warning area
- Areas where landslides are likely to occur

Legend of marks

- City Hall (Main office / Branch office)
- Police station
- Fire department
- Evacuation shelter (in the event of flood)
- Evacuation area
- Evacuation facility outside the City (in the event of flood, etc.)
- Underpass

Other legend

- Flood predicted area where houses may collapse
- Place suitable for evacuation such as high ground
- Area that can be used as a path to evacuate by car instead of the elevation that is safe in response to flooding, etc.

Scale: S=1:35,000

0 1 2 3 4 km

This map was reproduced from a 1:10,000 scale Fukuyama City Topographic Map issued by Fukuyama City, with the approval of the Mayor of Fukuyama City (Approval Number August 13, 2020, Shimokita No. 36-0).