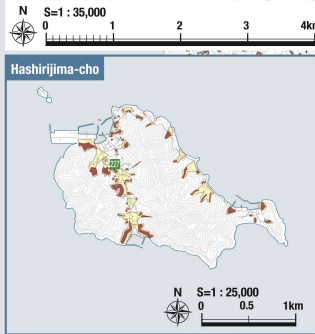
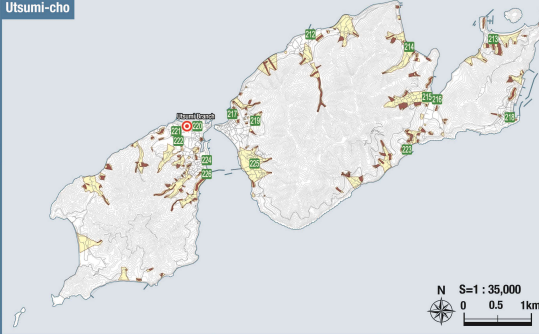
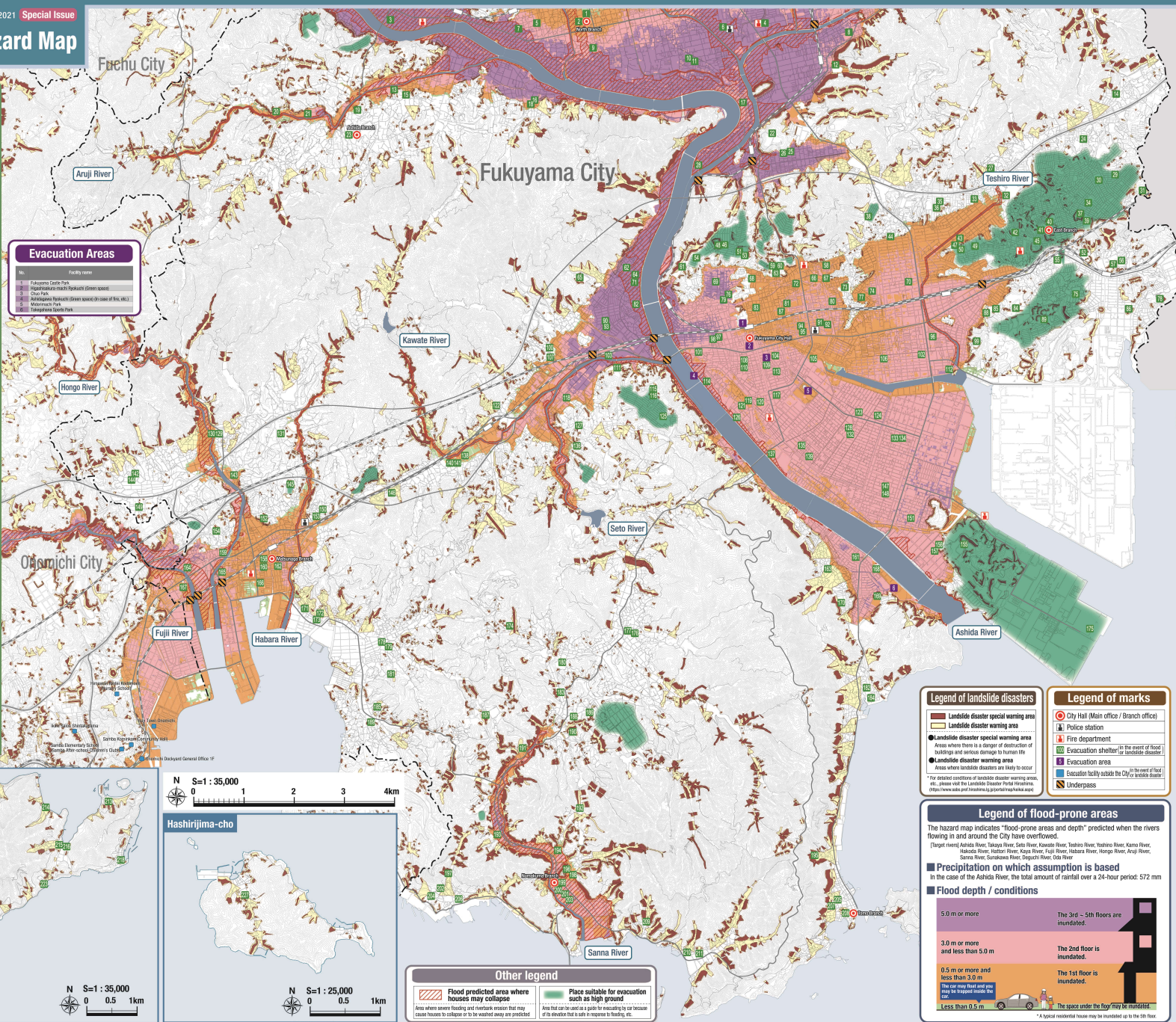


Evacuation Shelters			
No.	Facility name	Type of shelter	Flood
1	Daikoku Komae Community Hall	Community Hall	○
2	Yamada Elementary School	Elementary School	○
3	Yamada Junior High School	Junior High School	○
4	Daikoku Elementary School	Elementary School	○
5	Daikoku Junior High School	Junior High School	○
6	Fukuyama City Community Hall	Community Hall	○
7	Fukuyama City High School	High School	○
8	Yamada Elementary School	Elementary School	○
9	Yamada Junior High School	Junior High School	○
10	Yamada Elementary School	Elementary School	○
11	Yamada Junior High School	Junior High School	○
12	Yamada Elementary School	Elementary School	○
13	Yamada Junior High School	Junior High School	○
14	Yamada Elementary School	Elementary School	○
15	Yamada Junior High School	Junior High School	○
16	Yamada Elementary School	Elementary School	○
17	Yamada Junior High School	Junior High School	○
18	Yamada Elementary School	Elementary School	○
19	Yamada Junior High School	Junior High School	○
20	Yamada Elementary School	Elementary School	○
21	Yamada Junior High School	Junior High School	○
22	Yamada Elementary School	Elementary School	○
23	Yamada Junior High School	Junior High School	○
24	Yamada Elementary School	Elementary School	○
25	Yamada Junior High School	Junior High School	○
26	Yamada Elementary School	Elementary School	○
27	Yamada Junior High School	Junior High School	○
28	Yamada Elementary School	Elementary School	○
29	Yamada Junior High School	Junior High School	○
30	Yamada Elementary School	Elementary School	○
31	Yamada Junior High School	Junior High School	○
32	Yamada Elementary School	Elementary School	○
33	Yamada Junior High School	Junior High School	○
34	Yamada Elementary School	Elementary School	○
35	Yamada Junior High School	Junior High School	○
36	Yamada Elementary School	Elementary School	○
37	Yamada Junior High School	Junior High School	○
38	Yamada Elementary School	Elementary School	○
39	Yamada Junior High School	Junior High School	○
40	Yamada Elementary School	Elementary School	○
41	Yamada Junior High School	Junior High School	○
42	Yamada Elementary School	Elementary School	○
43	Yamada Junior High School	Junior High School	○
44	Yamada Elementary School	Elementary School	○
45	Yamada Junior High School	Junior High School	○
46	Yamada Elementary School	Elementary School	○
47	Yamada Junior High School	Junior High School	○
48	Yamada Elementary School	Elementary School	○
49	Yamada Junior High School	Junior High School	○
50	Yamada Elementary School	Elementary School	○
51	Yamada Junior High School	Junior High School	○
52	Yamada Elementary School	Elementary School	○
53	Yamada Junior High School	Junior High School	○
54	Yamada Elementary School	Elementary School	○
55	Yamada Junior High School	Junior High School	○
56	Yamada Elementary School	Elementary School	○
57	Yamada Junior High School	Junior High School	○
58	Yamada Elementary School	Elementary School	○
59	Yamada Junior High School	Junior High School	○
60	Yamada Elementary School	Elementary School	○
61	Yamada Junior High School	Junior High School	○
62	Yamada Elementary School	Elementary School	○
63	Yamada Junior High School	Junior High School	○
64	Yamada Elementary School	Elementary School	○
65	Yamada Junior High School	Junior High School	○
66	Yamada Elementary School	Elementary School	○
67	Yamada Junior High School	Junior High School	○
68	Yamada Elementary School	Elementary School	○
69	Yamada Junior High School	Junior High School	○
70	Yamada Elementary School	Elementary School	○
71	Yamada Junior High School	Junior High School	○
72	Yamada Elementary School	Elementary School	○
73	Yamada Junior High School	Junior High School	○
74	Yamada Elementary School	Elementary School	○
75	Yamada Junior High School	Junior High School	○
76	Yamada Elementary School	Elementary School	○
77	Yamada Junior High School	Junior High School	○
78	Yamada Elementary School	Elementary School	○
79	Yamada Junior High School	Junior High School	○
80	Yamada Elementary School	Elementary School	○
81	Yamada Junior High School	Junior High School	○
82	Yamada Elementary School	Elementary School	○
83	Yamada Junior High School	Junior High School	○
84	Yamada Elementary School	Elementary School	○
85	Yamada Junior High School	Junior High School	○
86	Yamada Elementary School	Elementary School	○
87	Yamada Junior High School	Junior High School	○
88	Yamada Elementary School	Elementary School	○
89	Yamada Junior High School	Junior High School	○
90	Yamada Elementary School	Elementary School	○
91	Yamada Junior High School	Junior High School	○
92	Yamada Elementary School	Elementary School	○
93	Yamada Junior High School	Junior High School	○
94	Yamada Elementary School	Elementary School	○
95	Yamada Junior High School	Junior High School	○
96	Yamada Elementary School	Elementary School	○
97	Yamada Junior High School	Junior High School	○
98	Yamada Elementary School	Elementary School	○
99	Yamada Junior High School	Junior High School	○
100	Yamada Elementary School	Elementary School	○

Evacuation Areas

No. Facility name

- 1 Fukuyama Civic Park
- 2 Higashi-Fukuyama Sports Field (Green space)
- 3 Chuo Park
- 4 Higashi-Fukuyama Sports Field (Green space) (In case of No. 1, 2, 3)
- 5 Takayama Sports Park



Legend of landslide disasters

- Landslide disaster special warning area
- Landslide disaster warning area
- Landslide disaster special warning area
- Landslide disaster warning area
- Landslide disaster warning area

Legend of marks

- City Hall (Main office / Branch office)
- Police station
- Fire department
- Evacuation shelter (In the case of flood)
- Evacuation area
- Evacuation facility outside the City (In the case of flood)
- Underpass

Legend of flood-prone areas

The hazard map indicates "flood-prone areas and depth" predicted when the rivers flowing in and around the City have overflowed.

(Target rivers) Ashida River, Takaya River, Seto River, Kawate River, Teshiro River, Yoshino River, Kama River, Habara River, Hongo River, Kaga River, Fuji River, Habara River, Hongo River, Aruji River, Sanna River, Sankawa River, Chuguchi River, Goh River

Precipitation on which assumption is based
 In the case of the Ashida River, the total amount of rainfall over a 24-hour period: 572 mm

Flood depth / conditions

- 5.0 m or more: The 3rd ~ 5th floors are inundated.
- 3.0 m or more and less than 5.0 m: The 2nd floor is inundated.
- 0.5 m or more and less than 3.0 m: The 1st floor is inundated.
- Less than 0.5 m: The space under the floor may be inundated.

* A special residential floor may be inundated up to the 5th floor.

Other legend

- Flood predicted area where houses may collapse
- Place suitable for evacuation such as high ground